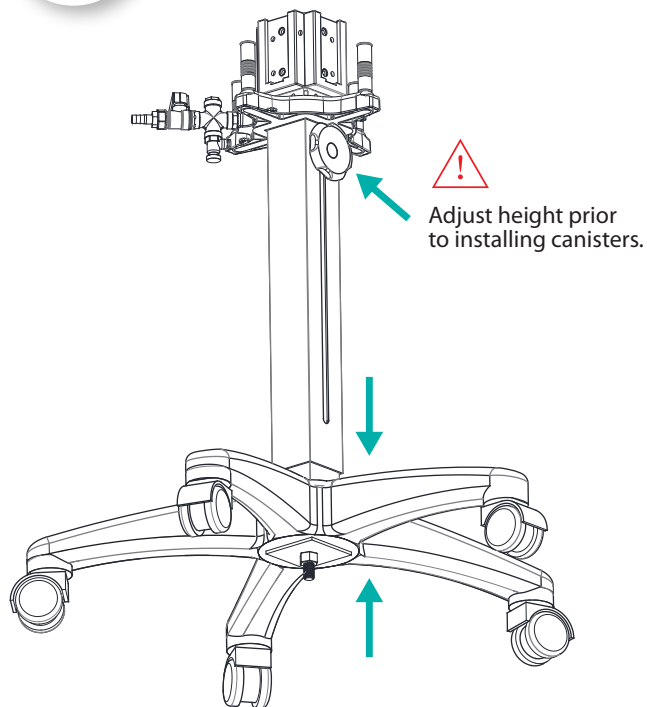


RECEPTAL® Manifold Trolley System Installation

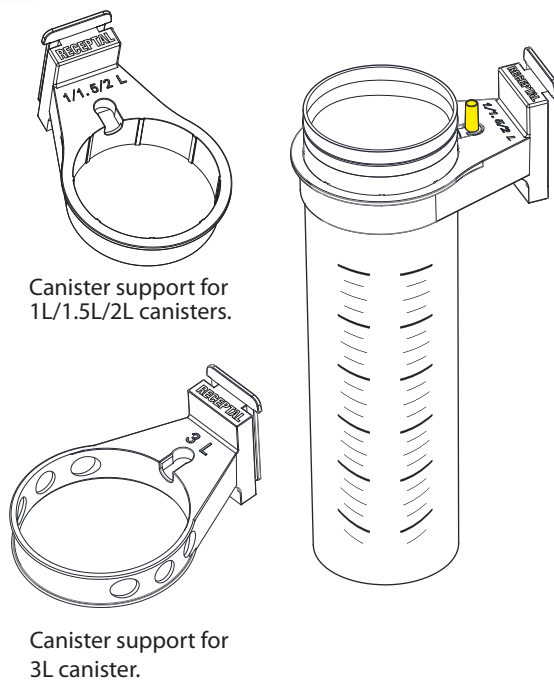
1

Open the case, connect the main body of frame to floor stand.



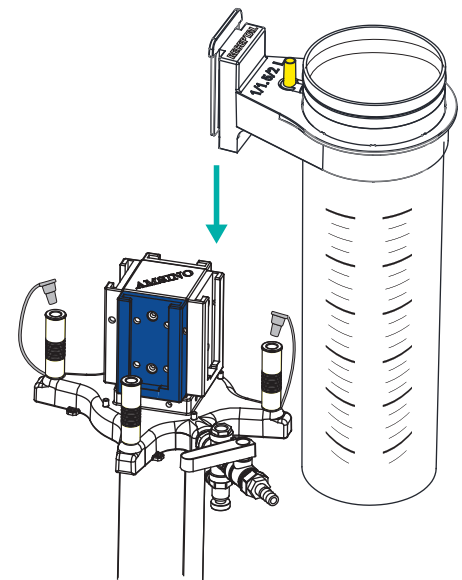
2

Insert canister into plastic canister support.



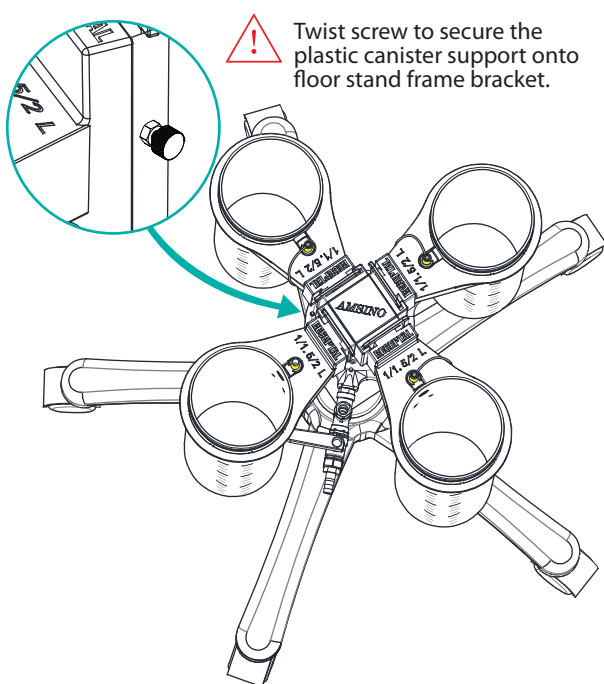
3

Insert canister support with canister into floor stand frame bracket.



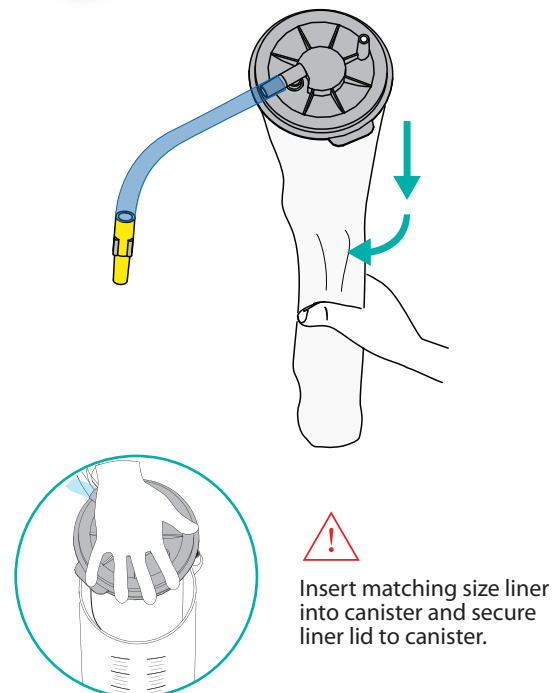
4

Insert additional canister supports with canisters into floor stand frame bracket.



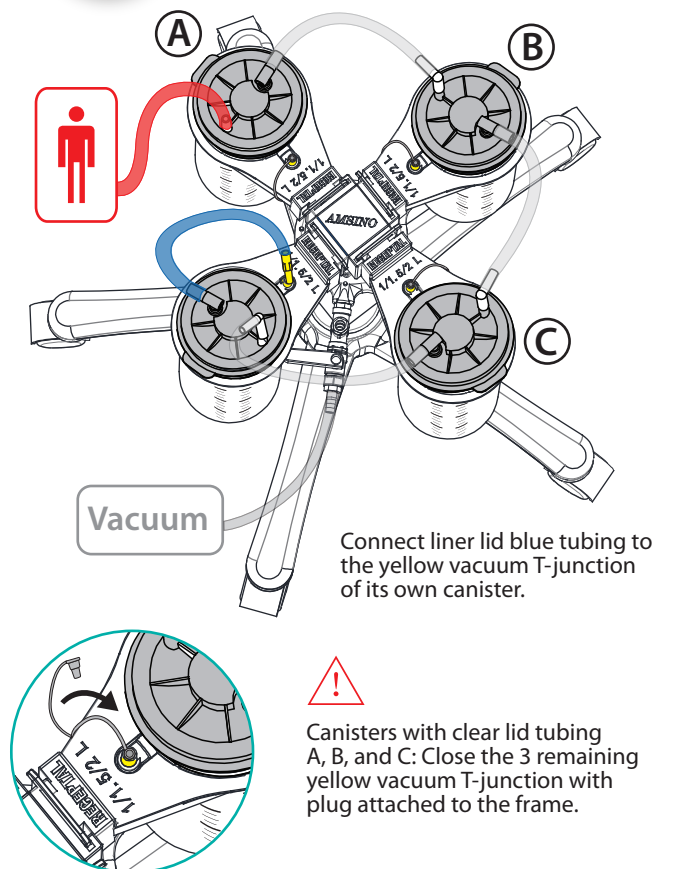
5

Straighten liner by pulling down and twisting prior to canister insertion.

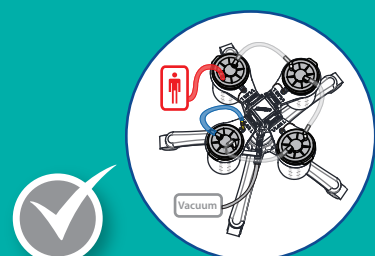


6

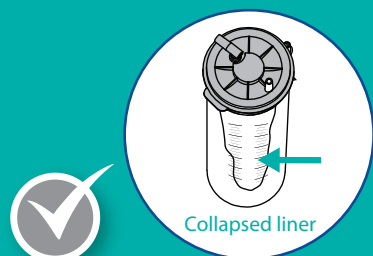
Connect liner lid tubing as shown, then turn on vacuum.



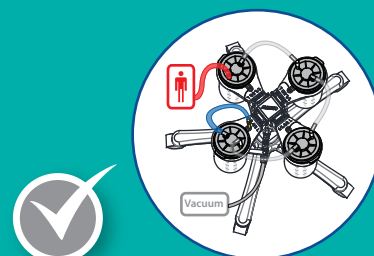
Quick Reference Tips



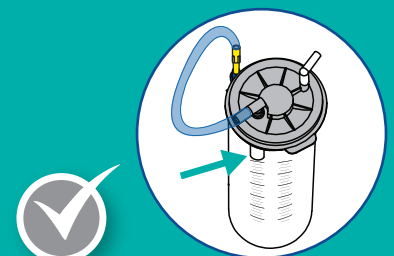
The system only works with negative pressure, verify suction prior to use. Connect tubing to the patient port and open the valve after complete canister/liner assembly.



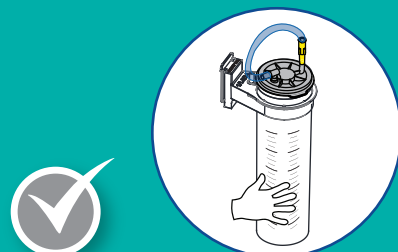
If liner collapses while working, check to ensure all port connections are tight or capped, and the liner lid is firmly sealed onto canister. If above fails, replace liner.



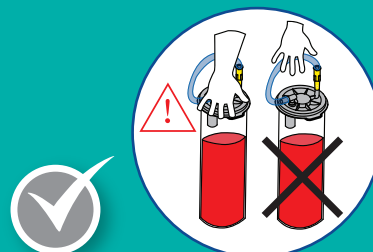
Leave vacuum on until end of the procedure, and cap all ports to avoid exposure.



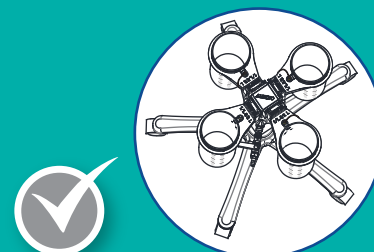
Prior to use, verify if the shut off valve of liner with blue tubing is installed correctly.



Disconnect liner tubing and immediately reconnect to its open port with push and twist motion (friction lock).



Do not use lid tubing as a handle to lift or carry liner.



The canisters and floor stand can be cleaned, but the liners are single use.



Visit video library for set up video.